



MEGA4000

PR-4000

This product manual contains important information about the safe installation and use of this projector. Please read and follow these instructions carefully and keep this manual in a safe place for future reference.

PR LIGHTING LTD.

No. 571, Yingbin Road, Dashi Panyu, Guangzhou, 511430 China
<http://www.pr-lighting.com>

WARNINGS



WARNING!

Make sure be disconnected from mains before any service is done.



CAUTION! EYEDAMAGES!

Avoid looking directly into the light source (meant especially for epileptics)!



WARNING!

Keep at least a distance of 3m between the apparatus and inflammable materials.



WARNING!

Keep at least a distance of 3m between the apparatus and striking materials.



CAUTION! HOT LAMP !

Disconnect from mains before replacing the lamp. And allow cooling for 10 minutes before open the cover.



WARNING !

Change lens and lamp if they become damaged!



INTRODUCTION

Thank you for your purchasing of our innovative product MEGA 4000. Please read this manual carefully before you start to use this apparatus, that can protect you from personal hurt or device damage.

MEGA 4000 is our newly developed luminaire for outdoor use. The frame is made from high intensity alloy aluminium. The style is beautiful and the structure is strong and reasonable. It represents the features of modern luminaires. The Xenon 4000W lamp is powerful and has good color rendering property. MEGA 4000 adopts innovative optical system which can adjust beam focus from 5m to 10,000m and beam angles from 0 to 25 degrees.

MEGA 4000 can adjust speed, rotating angle and tilt angle. It has good water-proof property and safety device for high temperature. The operation is simple and the usage is wide.

SAFETY

- ! The apparatus is for outdoor use only.
- ! The apparatus can be installed, operated and maintained by qualified personnel only.
- ! Please check if there is any damage during transportation before use.
- ! Be sure to locate the device in a place with adequate ventilation at least 15cm from the walls. Be sure that the fans are good and no ventilational holes are blocked.
- ! Make sure that the power cord is never crimped or damaged by sharp edges. Never let the power cord come into contact with other cables.
- ! Never use lamps and fuses which do not match the requirements of the apparatus.
- ! The electric connection must be carried out by qualified personnel.
- ! Before installation, make sure that the voltage and frequency of the power supply match the power requirements of the apparatus.
- ! There is no any parts inside the fixture can be maintained by user. Please do not open the housing.
- ! Please do never run the device without lamp.
- ! Please make sure that the housing is closed firmly with all the necessary screws tightened up before use. Never use the fixture with the covers opened.
- ! Do not touch the device's housing with bare-hand during operation (housing becomes hot).
- ! Do not connect this device to any dimmer pack.
- ! Installation, operation and maintenance by unprofessional personnel is not permitted. Most damages are the result of unprofessional operation.
- ! Do not shake the device.
- ! Do not switch the fixture on and off in short intervals as this would reduce the device and lamp's life.
- ! Regular rest for the luminaire is useful to prolong the luminaire' life and to reduce troubles. Please do not let the luminaire continuously work for a long time.
- ! When lenses are cracked or damaged, please contact with dealer and replace them.
- ! The lamp should be changed immediately if it becomes damaged or less bright.
- ! The using fuse is 150A. Please use the fuse with the same type and rating only.
- ! Please use the original packaging when the device is to be transported again.

POWER SUPPLY - MAINS

Use the plug provided to connect the mains power to the projector paying attention to the voltage and frequency marked on the panel of the projector. It is recommended that each projector is supplied separately so that they may be individually switched on and off. It is recommended that the projector connect to the mains using a 3-pin 32A plug.

FITTING THE LAMP

Remove the front and back covers of the projector-head.
Install the lamp in the proper position.
Fix the both ends of the lamp via tight the two nuts.

TECHNICAL SPECIFICATIONS

Power supply: 230V AC 50Hz
Power consumption: 4150W at 220V
IP rating: IP44
Lamp: Xenon 4000W
Colour temperature: 6000°K
Beam angle: 0 to 25 degrees, adjustable, visible for up to 10 kilometres
Rotating angle: 0 to 180 degrees, adjustable
Control: Automatic stand-alone operation
Head movement: Pan 180°, tilt manually adjustable through 40°
Dimensions: 750mm x 680mm x 1000mm
Net weight : 97kg
Others: Safety device for high temperature

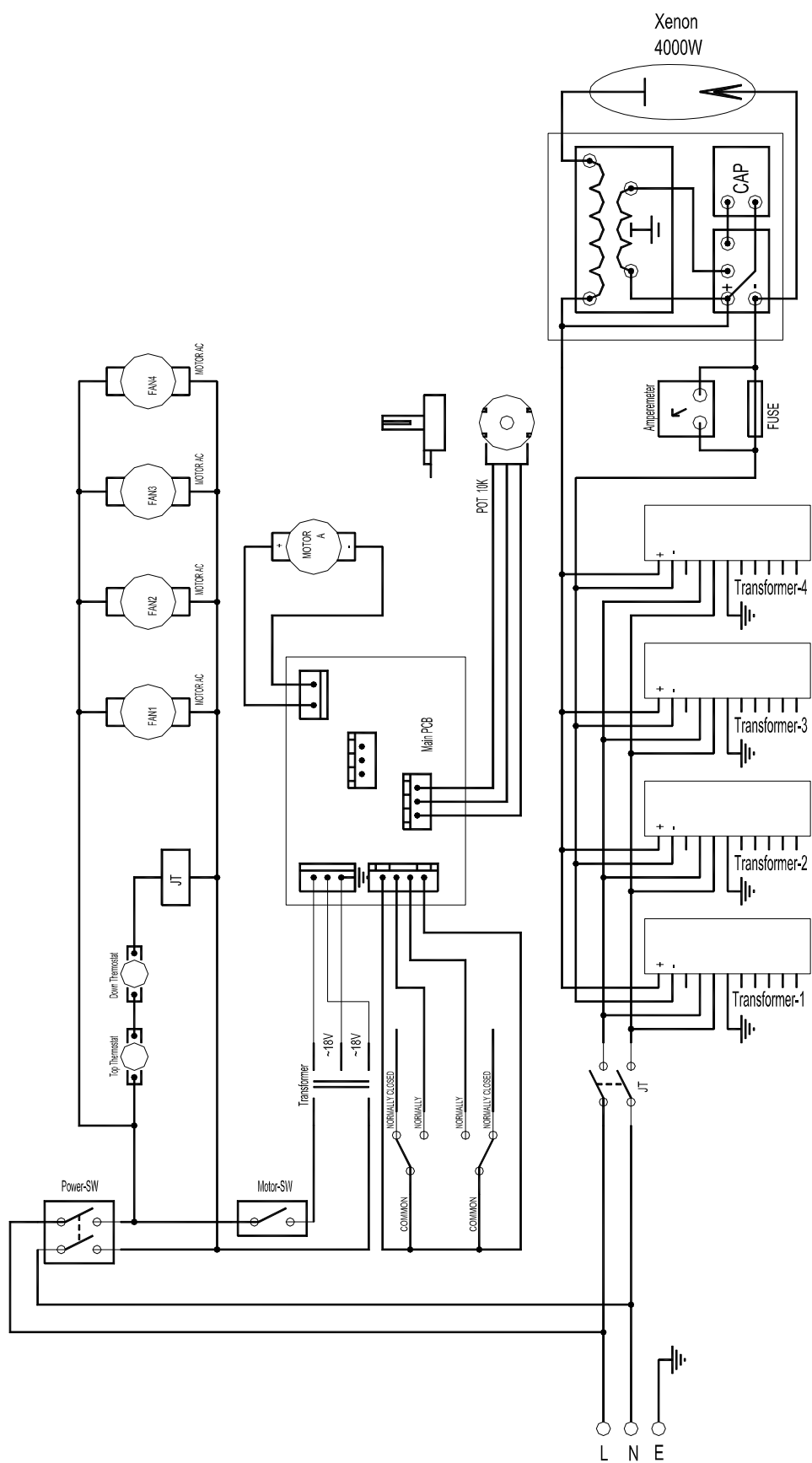
MAINTENANCE AND CLEANING

The cleaning of internal and external optical lenses and mirrors must be carried out periodically to optimize light output. Cleaning frequency depends on the environment in which the fixture operates: damp, smoke or particularly dirty surroundings can cause greater accumulation of dirt on the unit's optics. A soft cloth and the typical products of cleaning glass should be used in cleaning. It is recommended that clean the external optics at least once every 20 days and clean the internal optics at least once every 30 /60 days.


Do not touch the glass-bulb with bare-hand during installation. Before operation, please clean the lamp with alcohol so as to improve the lamp's effect and prolong the lamp's life.

Please do not use any organic solvent, e.g. alcohol, to clean the housing of the apparatus.

ELECTRICAL DIAGRAM



IMPORTANT STATEMENT

 The apparatus is tested and packed properly by the manufacturer. Please make sure the packing and / or the apparatus in good conditions before installation and use. Any loss caused by improper uses according this manual will not be assumed by the manufacturer and / or dealers.

This manual is subject to change without notification.

PR LIGHTING LTD.

No. 571, Yingbin Road, Dashi, Panyu, Guangzhou, China
Post-Code: 511430
TEL: +86-20-8478 1888
FAX: +86-20-8478 6023

P/N: 320040002
Last Revision: 17:04:2004